



Installing Silva 0.9.3 on Windows 2000 and XP

Version: 1.2, 2004/02/03
Status: Final
Valid for: Windows 2000, XP
Python 2.1.3
Zope 2.6.2
Author: Doris Tomaschewski, Wolfgang Korosec, Samuel Schlupep
Email: tomaschewski@id.ethz.ch, korosec@id.ethz.ch,
schluep@iha.bepr.ethz.ch

Microsoft Windows XP is equipped with tremendous amounts of helpers, themes, wizards and other more or less useless gadgets. We think that a lot of users have switched to classic mode or have modified the look and feel of the user interface in a significant way. As a consequence we do provide only a minimum of screenshots in this documentation (avoiding a waste of paper and bandwidth ;-), hoping that this text contains sufficient information to set up Zope and Silva successfully.

This HowTo describes a plain vanilla installation of Zope and Silva on Windows XP Professional. The way this is done works for Windows 2000 too.

Check the setup of your machine

It is assumed that you have Administrator privileges. All programs used, are in binary format, no additional compiler is needed. A directory `C:\win32app` is chosen to install Python and Zope. (Default for most Windows programs is `%SYSTEMDISK%\Program Files`, but it makes life easier in some cases to avoid spaces in the pathname.)

Get the necessary Files

You will need the following files:

- `Silva-0.9.3-all.tgz`
- `Zope-2.6.2-win32-x86.exe`
- `Python-2.1.3.exe`
- `PyXML-0.8.3.win32-py2.1.exe`

You will find all files you need by following the links of the following websites:

- Silva website (on Zope): <http://www.zope.org/Members/infrae/Silva>
- Zope 2.6.2: <http://zope.org/Products/Zope/2.6.2>
- Python 2.1.3: <http://www.python.org/2.1.3/>
- PyXML for Windows <http://sourceforge.net/projects/pyxml>
PLEASE NOTE: you **MUST** choose the version for Python 2.1.x

Install Python

We will not use the Python interpreter that comes already with Zope, because the PyXML installer will not recognize it. It would be possible to add the necessary keys to the Windows registry, but the method described here is easier to set up and more flexible.



1. Double-click `Python-2.1.3.exe`
2. Choose `C:\win32app\Python21` as the destination directory – click *Next*
3. *Backup Replaced Files* – *Yes* – *Next*
4. *Select Components* – take them all – *Next*
5. Click through the rest of the screens
6. After the Python installation is completed, open a Command Prompt window to test the installation
7. Type `C:\win32app\Python21\python` into the Command Prompt window to start the Python interpreter. You should see the following lines:

```
Python 2.1.3 (#35, Apr 8 2002, 17:47:50) [MSC 32 bit (Intel)] on win32
Type "copyright", "credits" or "license" for more information.
>>>
```
8. Stop the Python interpreter by typing *Ctrl+C* or by closing the Command Prompt window

Install PyXML

1. Double-click `PyXML-0.8.1.win32-py2.1.exe`
2. Select *Python 2.1* as the Python installation to use
3. Click through the rest of the screens.

Install Zope

1. Double-click `Zope-2.6.2-win32-x86.exe`
2. Accept the usual licence and copyright stuff ...
3. Select a nice name for your site: *Silva* for example
4. Select `C:\win32app\Silva_093` as the destination directory
5. Select username and password for the site administrator and do not forget it ☺
6. The installation process will run some scripts now – this may take a few seconds (depending on the speed of your machine).
7. Choose *Run the server manually* – this is the recommended option for a test and development environment. Zope is ready for takeoff.

Modify the Zope startup script

1. Click the `start.bat` icon in `C:\win32app\Silva_093` with the right mouse button and select *Edit*
2. Change the line:

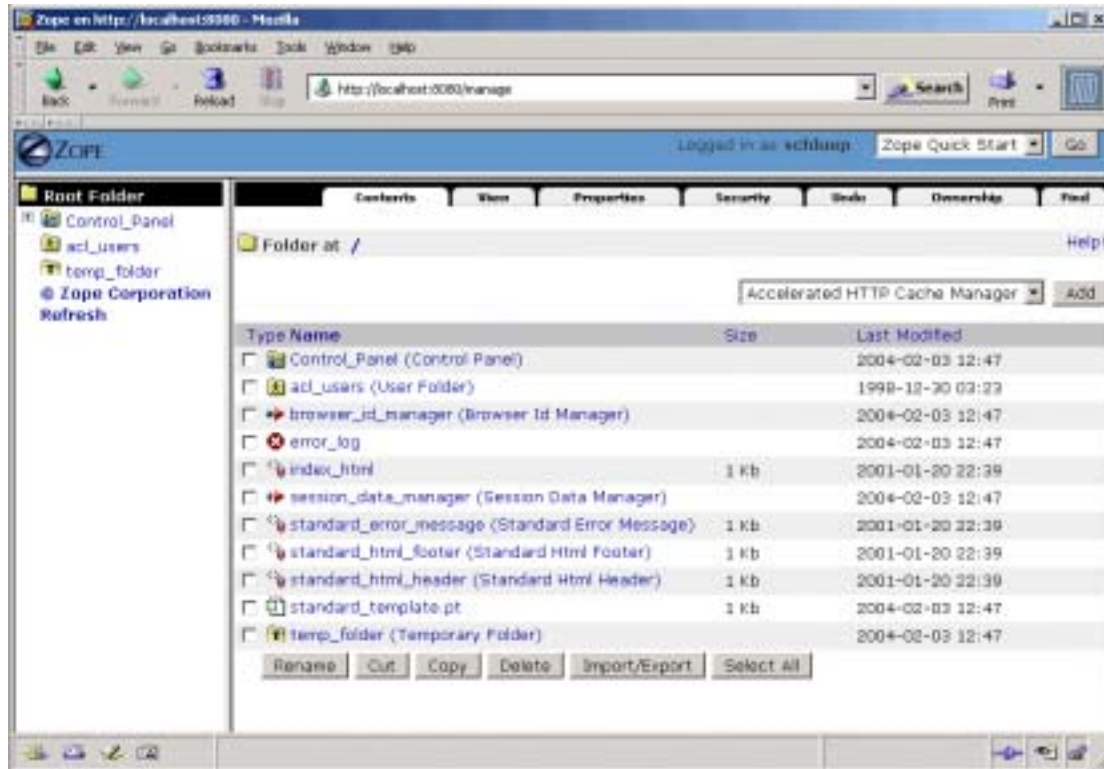
```
"C:\win32app\Silva_093\bin\python.exe" "C:\win32app\Silva_093\z2.py" -D %1 %2
%3 %4 %5 %6 %7 %8 %9"
```

to

```
"C:\win32app\Python21\python.exe" "C:\win32app\Silva_093\z2.py" -D %1 %2 %3 %4
%5 %6 %7 %8 %9"
```
3. Save your changes.
4. Start the Zope server by double clicking `start.bat`

Login as administrator by pointing your browser to <http://localhost:8080/manage> . Type in the username and password you have defined during the Zope installation. (Instead of `localhost` you might also use the hostname or the IP address of your machine.)

If you get the Zope Management Interface (ZMI), it is time to have a coffee or a beer ;-)



Install the Zope products needed to run Silva

1. Stop the Zope server by closing the Command Prompt window
2. Unzip `silva-0.9.3-all.tgz`. (If you use WinZip you will see the following message:
Archive contains one file:
Silva-0.9.3-all.tar.
Should WinZip decompress it to a temporary folder and open it?
Click Yes.)
3. There are the directories `Annotations`, `FileSystemSite`, `Formulator`, `ParsedXML`, `ProxyIndex`, `Silva`, `SilvaDocument`, `SilvaMetadata`, `SilvaViews` and `XMLWidgets` inside the Zip archive
4. Move or unzip these directories to
`C:\win32app\Silva_093\lib\python\Products`
5. It is extremely important to move it in the right place – so check twice !!!
6. Start the Zope server again, by double-clicking `start.bat`. Point your browser to <http://localhost:8080/manage> and login as administrator.
7. There should be no error messages during the startup. In the ZMI navigate to *Control Panel > Product Management*. You should see new items in the list of installed products and their icons should not be broken. Return to the Zope *Root Folder*.

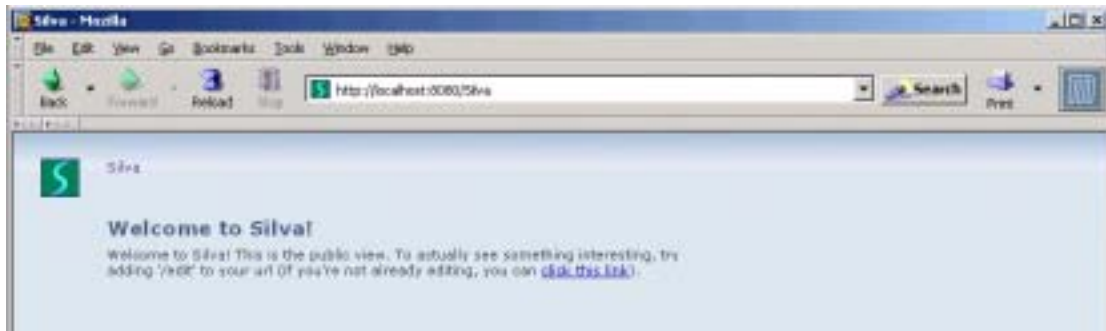
Create the Silva Root

(If the Zope server is not running yet, start it by double-clicking `start.bat`. Point your browser to <http://localhost:8080/manage> and login as administrator.)



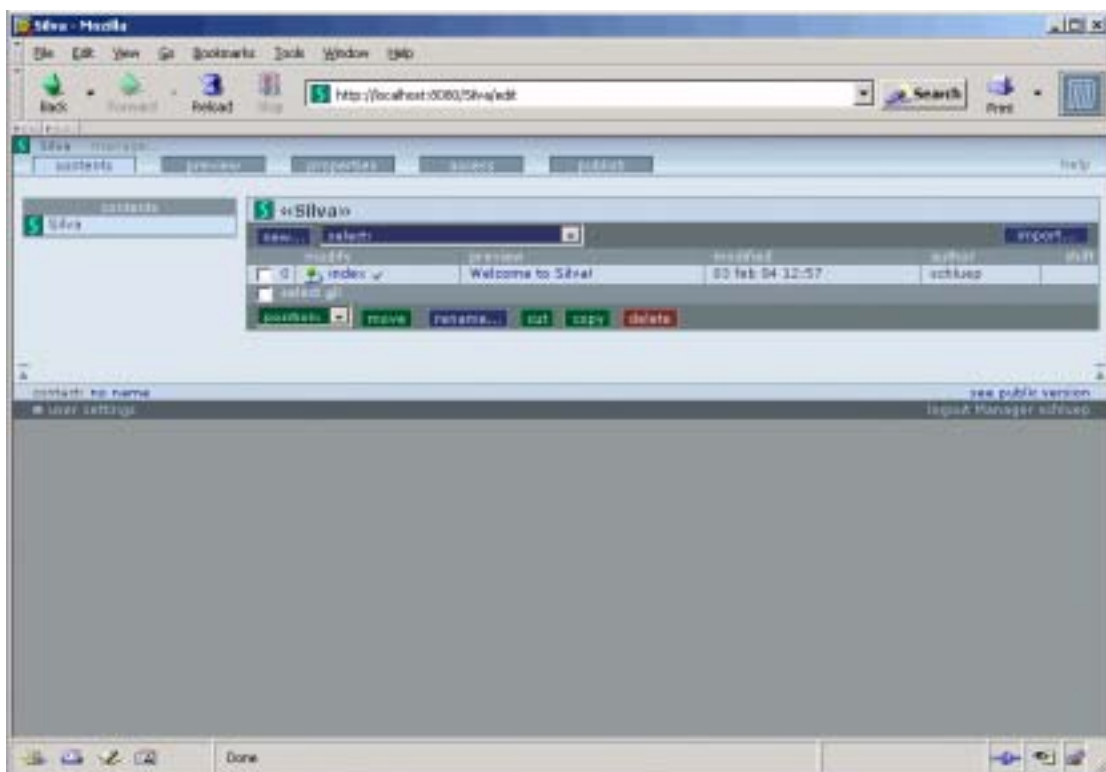
1. Select *Silva Root* from *Select type to add...* (the drop-down menu to the right of the screen). A new page should appear otherwise click *Add*.
2. Type in a name of choice for *Id* and *Title* (for example *Silva*) and click *Add*
3. You will now see a Silva icon in the list of objects

Try out your brand new Silva site at <http://localhost:8080/Silva>



Start the Silva Management Interface

The Silva Management Interface (SMI) can be accessed by adding “/edit” to an URL of your site. Point your browser to <http://localhost:8080/Silva/edit> .
If a login is requested, log in as administrator. (We will define other users later.)



Congratulations, you have successfully installed Zope and Silva on your machine!

To learn more about Silva, please consult Jan Smith's excellent Silva Tutorial and the documentation provided by infrae.



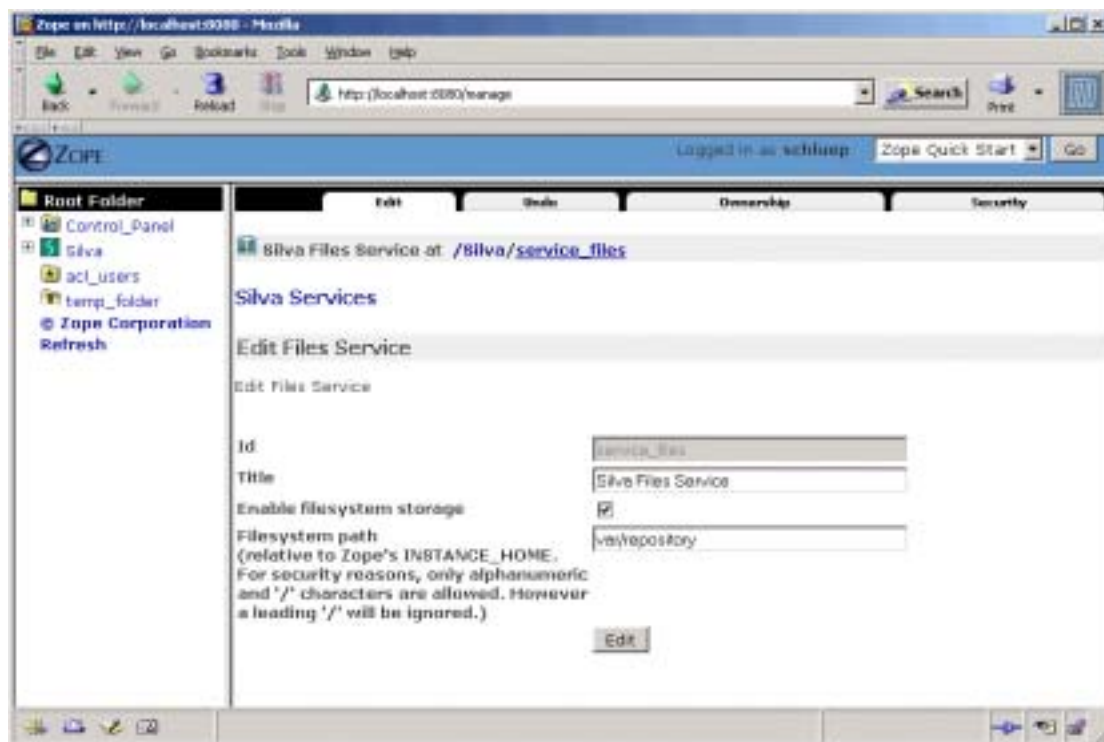
Install the ExtFile product (optional)

If you plan to manage large upload files with Silva, which should not be stored in the ZODB but the plain file system, you may consider installing the ExtFile product. This product is optional.

1. Stop the Zope server by closing the Command Prompt window.
2. Download ExtFile-1.2.0.tar.gz from <http://zope.org/Members/shh/ExtFile/1.2.0/>
3. Unzip ExtFile-1.2.0.tar.gz to
C:\win32app\Silva_093\lib\python\Products
4. Start the Zope server again, by double-clicking start.bat. Point your browser to <http://localhost:8080/manage> and login as administrator.
5. Navigate to ZMI Silva folder. Click the *Services* tab. Click on *service_files* in the list of services.
6. Select the checkbox *Enable filesystem storage*.
7. Click the *Edit* button.

Note that enabling/disabling ExtFile storage does not change the storage of the already present Silva File objects. More information is available in (text file):

C:\win32app\Silva_093\lib\python\Products\Silva\doc\FileObject.stx.



Install PIL (optional)

Silva provides image scaling and conversion when PIL (Python Imaging Library) is installed. The installation of PIL is optional and it can also be done later.

1. Stop the Zope server by closing the Command Prompt window
2. Download *Python Imaging Library 1.1.4 for Python 2.1* from <http://www.pythonware.com/products/pil/index.htm> (make sure you have the Python 2.1 version)



3. Double-click `PIL-1.1.4.win32-py2.1.exe`
4. Select *Python 2.1* as the Python installation to use
5. Click through the rest of the screens
6. Copy `PIL` and `pill.pth` from `C:\win32app\Python21` to `C:\win32app\Silva_093\lib\python`.
7. Copy `tk83.dll` and `tc183.dll` from `C:\win32app\Python21\DLLs` to `C:\win32app\Silva_093\bin\DLLs` (these last two steps are required to integrate PIL into Zope).
8. Start Silva again, by double-clicking `start.bat`. Point your browser to <http://localhost:8080/Silva/edit> and create a Silva Image. It should now be possible to scale the image and change its format for web delivery.

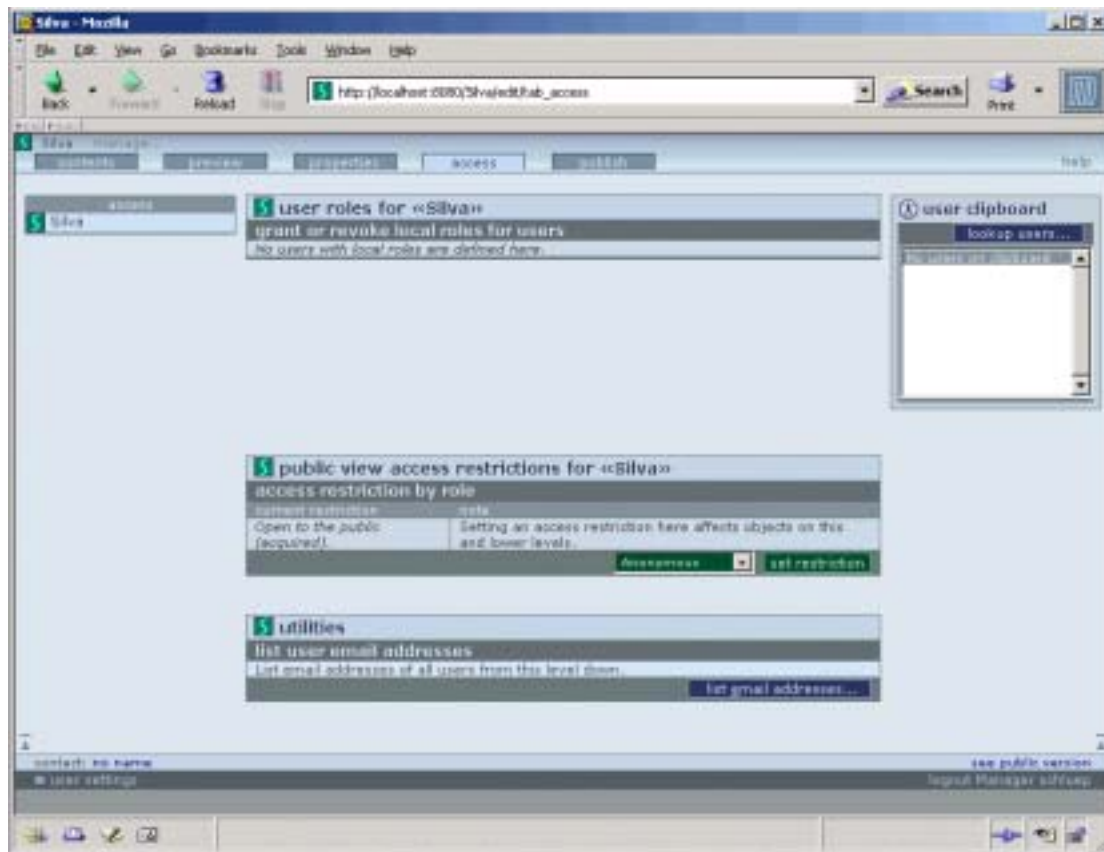
Set up the Silva users

For more detailed documentation of Silva users and roles see the documentation provided by infrae at <http://www.infrae.com/products/silva/docs/AuthorEditorChief/ContainerObject/AccessTab/>

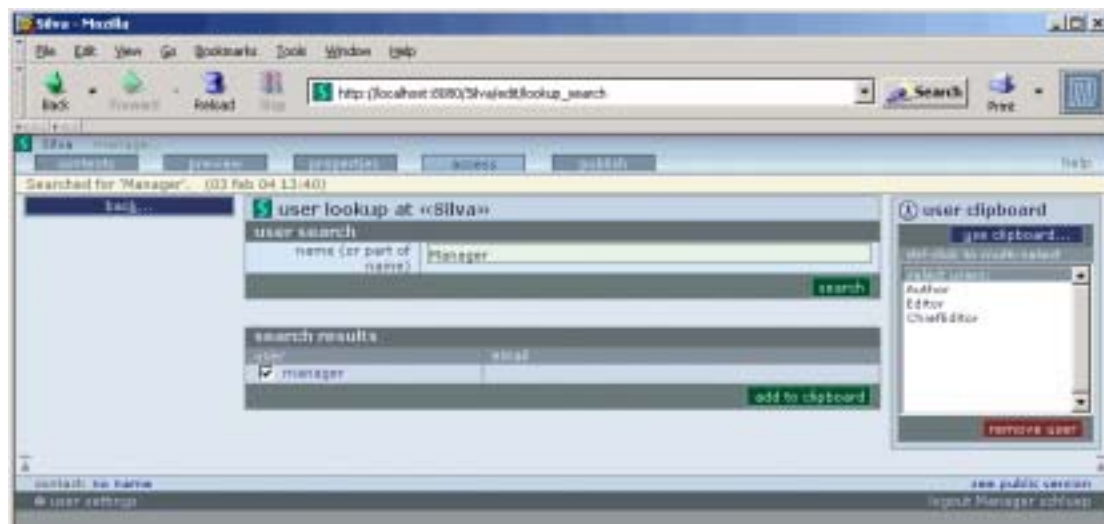
1. Go to the ZMI by pointing the browser to <http://localhost:8080/manage> and login as administrator
2. Navigate to ZMI *Silva* folder
3. Add a *User Folder* (using the *Select type to add* drop-down menu to the right of the screen)
4. To add users click the *Add...* button inside the *User Folder*



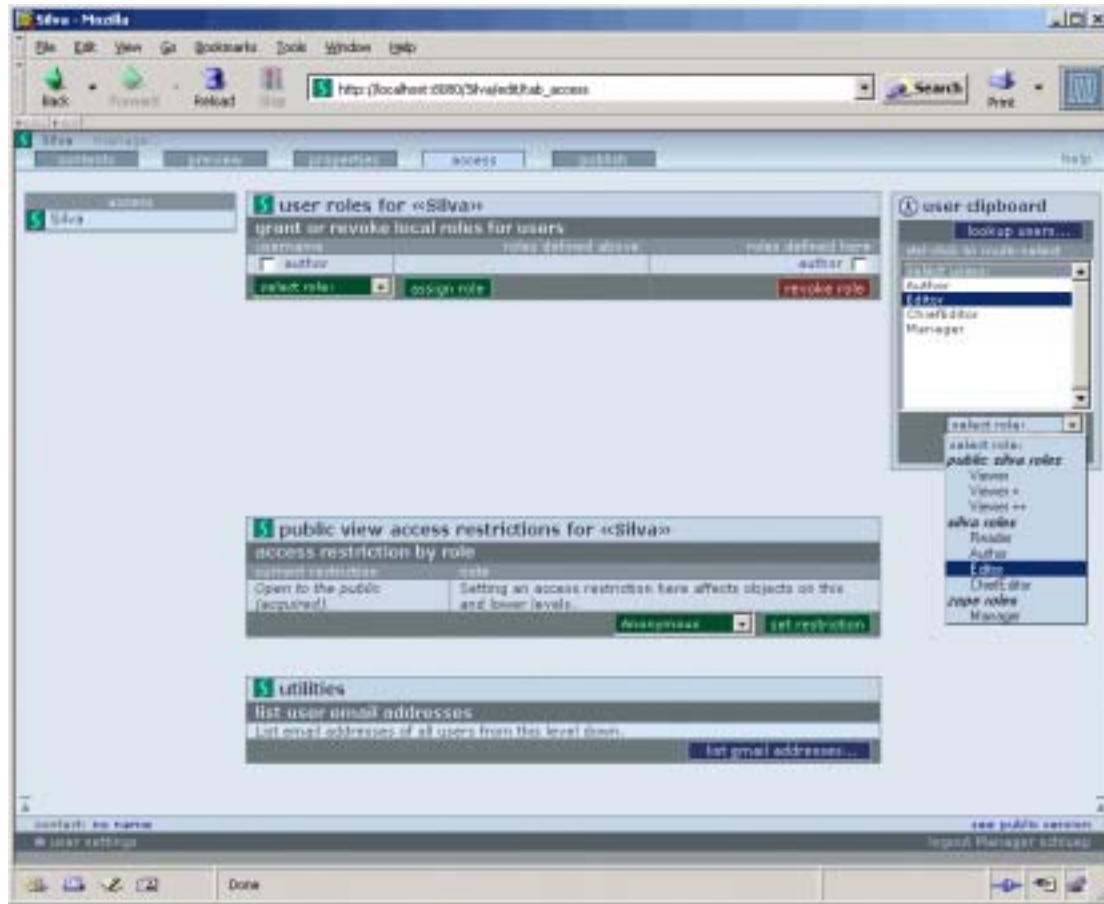
5. Set up some users with their passwords (for example *Author*, *Editor*, *Chiefeditor*, *Manager*, *Reader*). Do not choose any role, this will be set inside the SMI.
6. Go to the SMI by pointing the browser to <http://localhost:8080/Silva/edit>
7. Go to the *access* tab and click the *lookup users* button in the *user lookup clipboard* on the right.



8. Type the username into the *user search* input field and click *search*.
9. The requested username should appear in the *search results* list. Check the checkbox next to the username and click *add to clipboard*.



10. Repeat steps 7 and 8 until all users, you want to set up, appear in the *user clipboard* to the right of the search fields.
11. Click *use clipboard...*
12. In the *user clipboard* click on a username to select it. Then select a role from the *select role:* drop-down list. Click *Assign*. The username should appear in the list of *user roles* with its role assigned.
13. Repeat step 11 until all users are assigned a role



14. Click the logout link in the lower right corner. Click *Cancel* when the login prompt appears. (You can also logout by closing all your browser windows.)
15. Point your browser to <http://localhost:8080/Silva/edit> and login as another user (for example as *Author*).