



Installing Silva 1.6 on Windows 2000 and XP

Version: 1.6.0_1, 2007/05/24
Status: Final
Valid for: Windows 2000, XP
Python 2.3.5
Zope 2.8.8-final
Author: Doris Tomaschewski, Wolfgang Korosec, Samuel Schlupep
Email: tomaschewski@id.ethz.ch, korosec@id.ethz.ch,
schluep@ethz.ch

Microsoft Windows XP is equipped with tremendous amounts of helpers, themes, wizards and other more or less useless gadgets. We think that a lot of users have switched to classic mode or have modified the look and feel of the user interface in a significant way. As a consequence we do provide only a minimum of screenshots in this documentation (avoiding a waste of paper and bandwidth ;-), hoping that this text contains sufficient information to set up Zope and Silva successfully.

This HowTo describes a plain vanilla installation of Zope and Silva on Windows XP Professional. The way this is done works for Windows 2000 too.

Check the setup of your machine

It is assumed that you have Administrator privileges. All programs used, are in binary format, no additional compiler is needed. A directory `C:\win32app` is chosen to install Python and Zope. (Default for most Windows programs is `%SYSTEMDISK%\Program Files`, but it makes life easier in some cases to avoid spaces in the pathname.)

Get the necessary Files

You will need the following files:

- `Silva-1.6-all.tgz`
- `Zope-2.8.8-final-win32.exe`
- `Python-2.3.5.exe`

You will find all files you need by following the links of the following websites:

- Python 2.3.5: <http://www.python.org/download/releases/2.3.5/>
- Zope 2.8.8: http://www.zope.org/Products/Zope/swpackage_releases
get also the Hotfixes: [2006-08-21 hotfix](#) and [2007-03-20 hotfix](#)
- Silva 1.6: <http://www.infracore.com/download/Silva>

Install Python

We will not use the Python interpreter that comes already with Zope, because Windows installers for special libraries will not recognize it. It would be possible to add the necessary keys to the Windows registry, but the method described here is easier to set up and more flexible.

1. Double-click `Python-2.3.5.exe`
2. Choose `C:\win32app\Python23` as the destination directory – click *Next*
3. *Backup Replaced Files* – *Yes* – *Next*



4. *Select Components* – take them all – *Next*
5. Click through the rest of the screens
6. After the Python installation is completed, open a Command Prompt window to test the installation
7. Type `C:\win32app\Python23\python` into the Command Prompt window to start the Python interpreter. You should see the following lines:

```
Python 2.3.5 (#62, Feb  8 2005, 16:23:02) [MSC v.1200 32 bit (Intel)] on win32
Type "help", "copyright", "credits" or "license" for more information.
>>>
```
8. Stop the Python interpreter by typing *Ctrl+Z* and *Enter* or by closing the Command Prompt window

Silva XSLT support: Install libxml2 (recommended)

Silva XSLT support is built into Silva, but requires the external libraries libxml2 and libxslt with Python bindings to be enabled.

1. Download `libxml2-python-2.6.22.win32-py2.3.exe` from <http://gd.tuwien.ac.at/languages/html/libxml/win32/python/>. PLEASE NOTE: you **MUST** choose the version for Python 2.3.x
2. Double-click `libxml2-python-2.6.22.win32-py2.3.exe`
3. Click *Next*
4. Select *Python 2.3* as the Python installation to use
5. Click through the rest of the screens.

Install Zope

1. Double-click `Zope-2.8.8-final-win32.exe`
2. Click *Next*
3. Choose `C:\win32app\Zope-2.8.8-final` as the Zope main destination location – click *Next*
4. *Select Components* – *Full installation* – *Next*
5. *Select Start Menu Folder* – choose `Zope 2.8.8-final` – *Next*
6. Deselect *Run your Zope instance as a Windows service* – this is the recommended option for a test and development environment.
7. Choose `C:\win32app\Silva_16` as the Silva instance location – *Next*
8. Select a password for the site administrator (“admin”) and do not forget it ☺ – *Next*
9. Click *Install* - The installation process will run some scripts now – this may take a few seconds (depending on the speed of your machine). Zope is ready for takeoff.

Modify the Zope startup script

1. Click the `runzope.bat` icon in `C:\win32app\Silva_16\bin` with the right mouse button and select *Edit*
2. Change the line¹:

```
@set PYTHON=C:\win32app\Zope-2.8.8-final\bin\python.exe
```

to

```
@set PYTHONCASEOK=
```

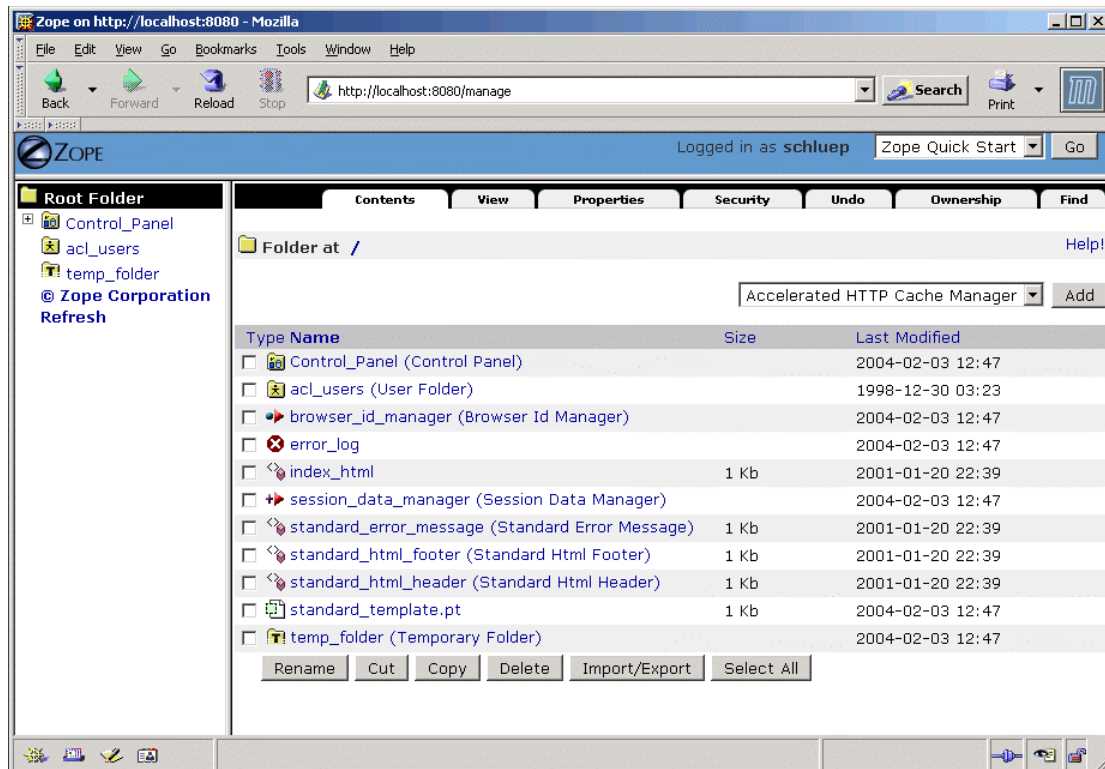
```
@set PYTHON=C:\win32app\Python23\python.exe
```
3. Save your changes.



4. Start the Zope server by double clicking `runzope.bat`

Login as administrator by pointing your browser to <http://localhost:8080/manage>. Type in the username (“admin”) and password you have defined during the Zope installation. (Instead of `localhost` you might also use the hostname or the IP address of your machine.)

If you get the Zope Management Interface (ZMI), it is time to have a coffee or a beer ;-)



Install the Zope hotfixes

1. Stop the Zope server by closing the Command Prompt window
2. Unzip `Hotfix_20060821.tar.gz`. (If you use WinZip you will see the following message:

```
Archive contains one file:
Hotfix_20060821.tar.
Should WinZip decompress it to a temporary folder and open it?
Click Yes.)
```
3. Move or unzip these directories to `C:\win32app\Silva_16\Products`
4. It is extremely important to move it in the right place – so check twice !!!
5. Unzip also `Hotfix_20070320.tgz` to `C:\win32app\Silva_16\Products`.
6. Start the Zope server again, by double-clicking `runzope.bat`. Point your browser to <http://localhost:8080/manage> and login as administrator.
7. There should be no error messages during the startup. In the ZMI navigate to *Control Panel > Product Management*. You should see the new hotfix items in the list of installed products and their icons should not be broken. Return to the *Zope Root Folder*.



Install the Zope products needed to run Silva

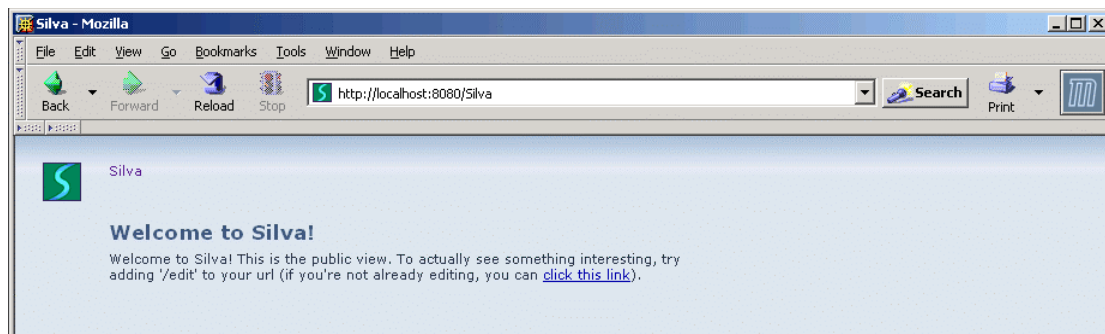
1. Stop the Zope server by closing the Command Prompt window
2. Unzip Silva-1.6-all.tgz. (If you use WinZip you will see the following message:
Archive contains one file:
Silva-1.6-all.tar.
Should WinZip decompress it to a temporary folder and open it?
Click Yes.)
3. There are the directories Annotations, FileSystemSite, Five, Formulator, kupu, ParsedXML, ProxyIndex, Silva, SilvaDocument, SilvaMetadata, SilvaViews, Sprout and XMLWidgets inside the Zip archive
4. Move or unzip these directories to C:\win32app\Silva_16\Products
5. Start the Zope server again, by double-clicking runzope.bat. Point your browser to <http://localhost:8080/manage> and login as administrator.
6. There should be no error messages during the startup. In the ZMI navigate to *Control Panel > Product Management*. You should see new items in the list of installed products and their icons should not be broken. Return to the Zope Root Folder.

Create the Silva Root

(If the Zope server is not running yet, start it by double-clicking runzope.bat. Point your browser to <http://localhost:8080/manage> and login as administrator.)

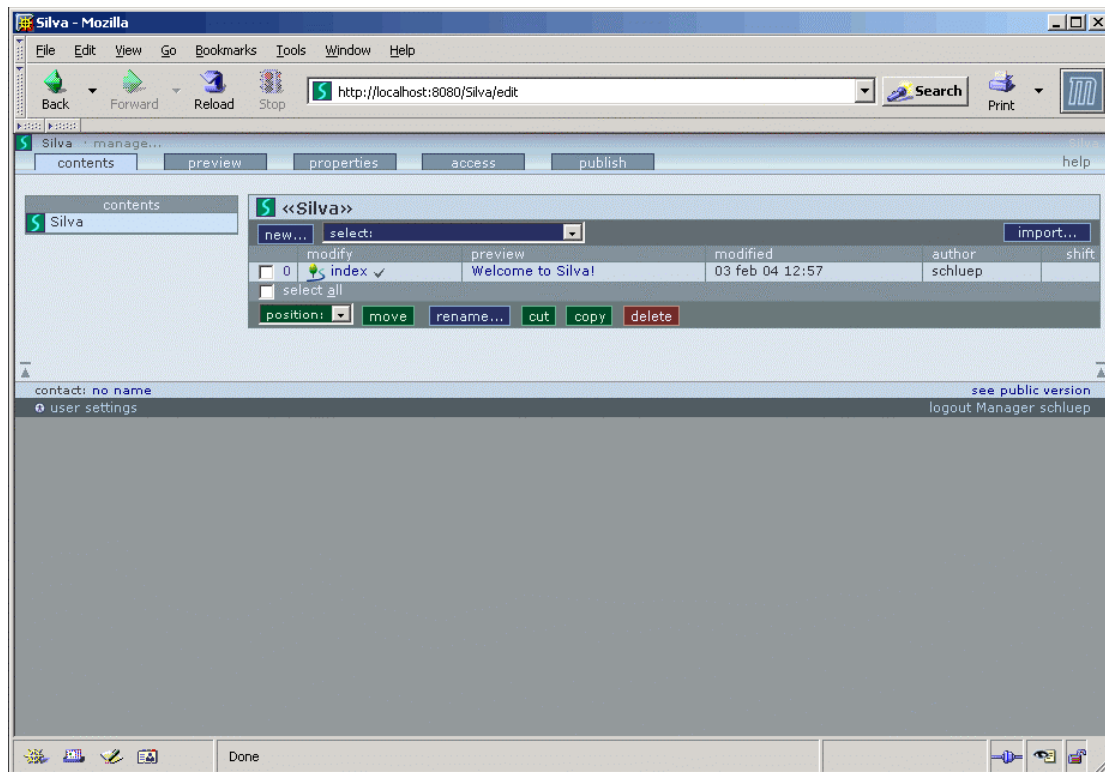
1. Select *Silva Root* from *Select type to add...* (the drop-down menu to the right of the screen). A new page should appear otherwise click *Add*.
2. Type in a name of choice for *Id* and *Title* (for example *Silva*) and click *Add*
3. You will now see a Silva icon in the list of objects

Try out your brand new Silva site at <http://localhost:8080/Silva>



Start the Silva Management Interface

The Silva Management Interface (SMI) can be accessed by adding “/edit” to an URL of your site. Point your browser to <http://localhost:8080/Silva/edit>. If a login is requested, log in as administrator. (We will define other users later.)

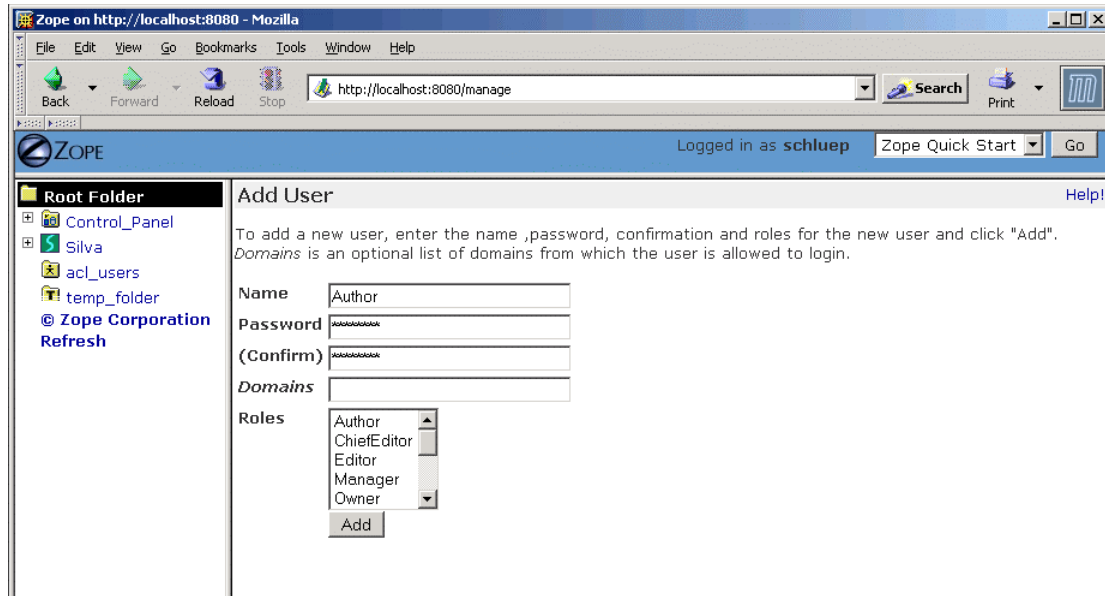


Congratulations, you have successfully installed Zope and Silva on your machine! To learn more about Silva, please consult Jan Smith's excellent Silva Tutorial and the documentation provided by Infrae at <http://www.infrae.com/products/silva/docs>

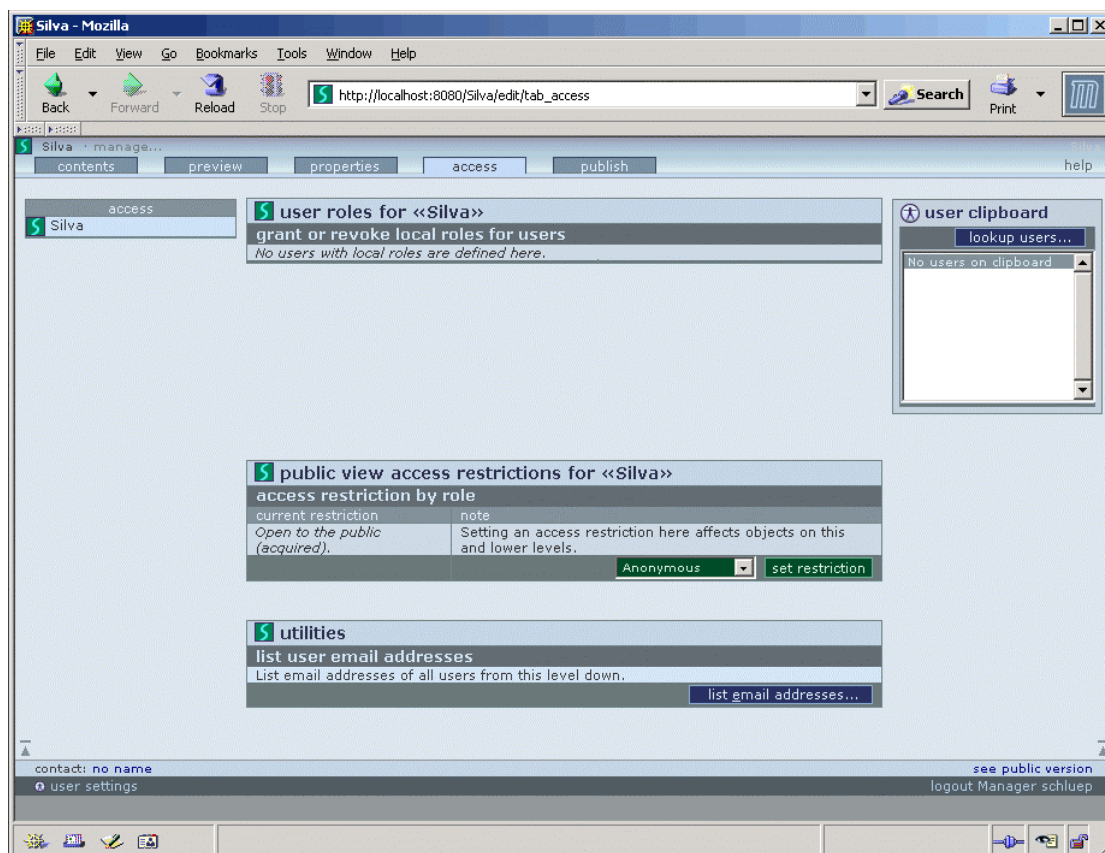
Set up the Silva users

For more detailed documentation of Silva users and roles see the documentation provided by infrae at <http://www.infrae.com/products/silva/docs/AuthorEditorChief/ContainerObject/AccessTab/>

1. Go to the ZMI by pointing the browser to <http://localhost:8080/manage> and login as administrator
2. Navigate to ZMI Silva folder
3. Add a *User Folder* (using the *Select type to add* drop-down menu to the right of the screen)
4. To add users click the *Add...* button inside the *User Folder*



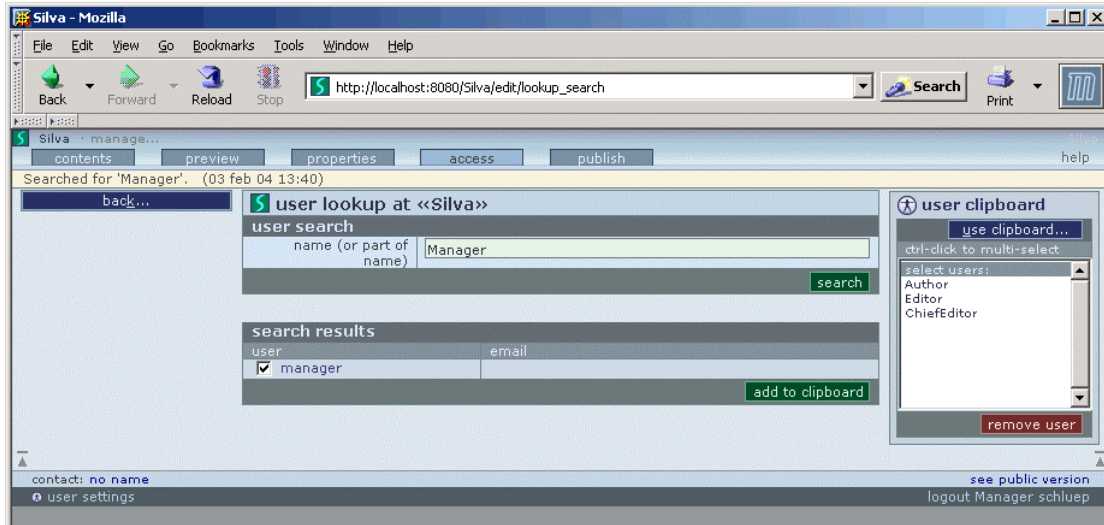
5. Set up some users with their passwords (for example Author, Editor, Chiefeditor, Manager, Reader). Do not choose any role, this will be set inside the SMI.
6. Go to the SMI by pointing the browser to <http://localhost:8080/Silva/edit>
7. Go to the *access* tab and click the *lookup users* button in the *user lookup clipboard* on the right.



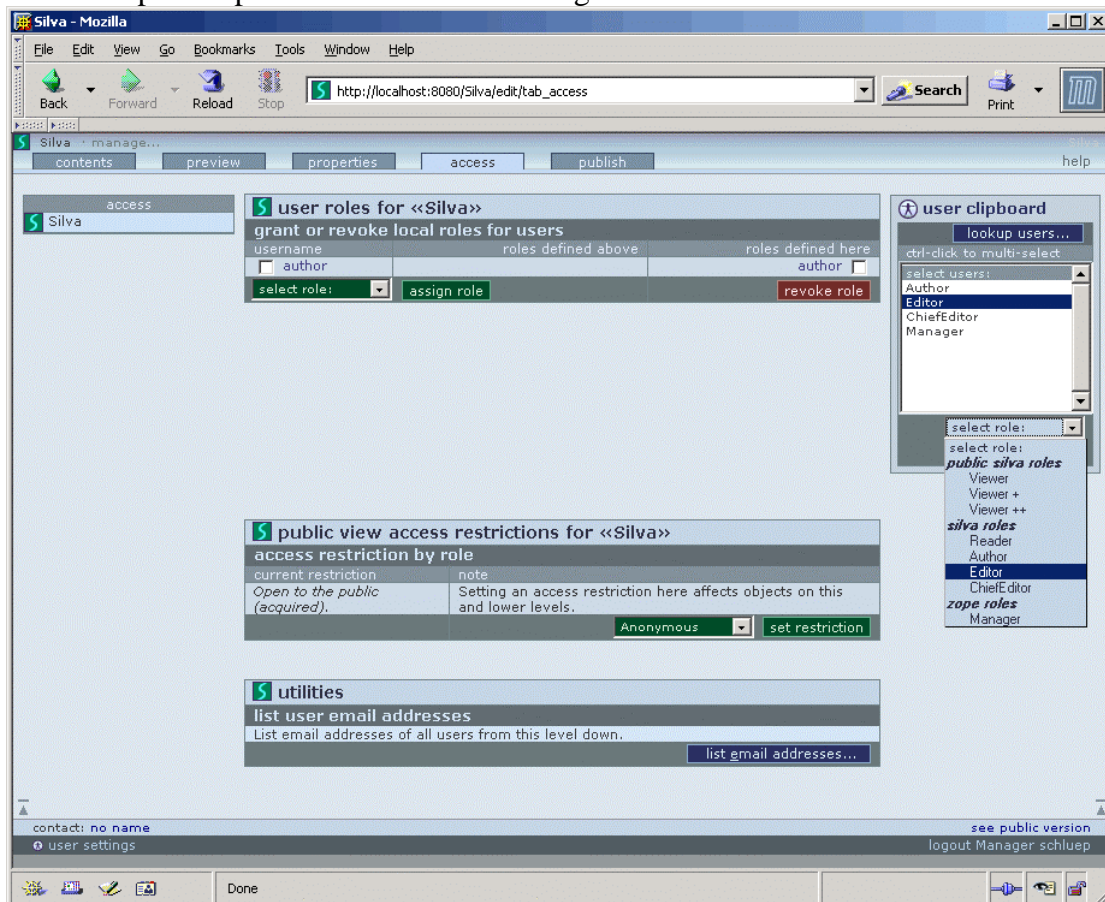
8. Type the username into the *user search* input field and click *search*.



- The requested username should appear in the *search results* list. Check the checkbox next to the username and click *add to clipboard*.



- Repeat steps 7 and 8 until all users, you want to set up, appear in the *user clipboard* to the right of the search fields.
- Click *use clipboard...*
- In the *user clipboard* click on a username to select it. Then select a role from the *select role:* drop-down list. Click *Assign*. The username should appear in the list of *user roles* with its role assigned.
- Repeat step 11 until all users are assigned a role





14. Click the logout link in the lower right corner. Click *Cancel* when the login prompt appears. (You can also logout by closing all your browser windows.)
15. Point your browser to <http://localhost:8080/Silva/edit> and login as another user (for example as *Author*).

Scalable images: Install PIL (optional)

Silva provides image scaling and conversion when PIL (Python Imaging Library) is installed. The installation of PIL is optional and it can also be done later.

1. Stop the Zope server by closing the Command Prompt window
2. Download *Python Imaging Library 1.1.6 for Python 2.3* from <http://www.pythonware.com/products/pil/index.htm> (make sure you have the Python 2.3 version).
3. Double-click `PIL-1.1.6.win32-py2.3.exe`
4. Select *Python 2.3* as the Python installation to use
5. Click through the rest of the screens

Integrate external data: Install SilvaExternalSources (optional)

External sources can be integrated into documents in Silva. External sources can be data from Python scripts, SQL databases or CSV tables (comma separated values). To use this feature you need the `SilvaExternalSources` product.

1. Stop the Zope server by closing the Command Prompt window.
2. Download `SilvaExternalSources-1.2.tgz` from <http://www.infracore.com/download/SilvaExternalSources>
3. Unzip `SilvaExternalSources-1.2.tgz` to `C:\win32app\Silva_16\Products`
4. Start the Zope server again, by double-clicking `runzope.bat` (in `C:\win32app\Silva_16\bin`). Point your browser to <http://localhost:8080/manage> and login as administrator.
5. In the ZMI navigate to the *Silva* root folder. Click the *Services* tab. Click on *service_extensions* in the list of services.
6. Click the *install* button of *Silva External Sources*.

Large files in the file system: Install ExtFile (optional)

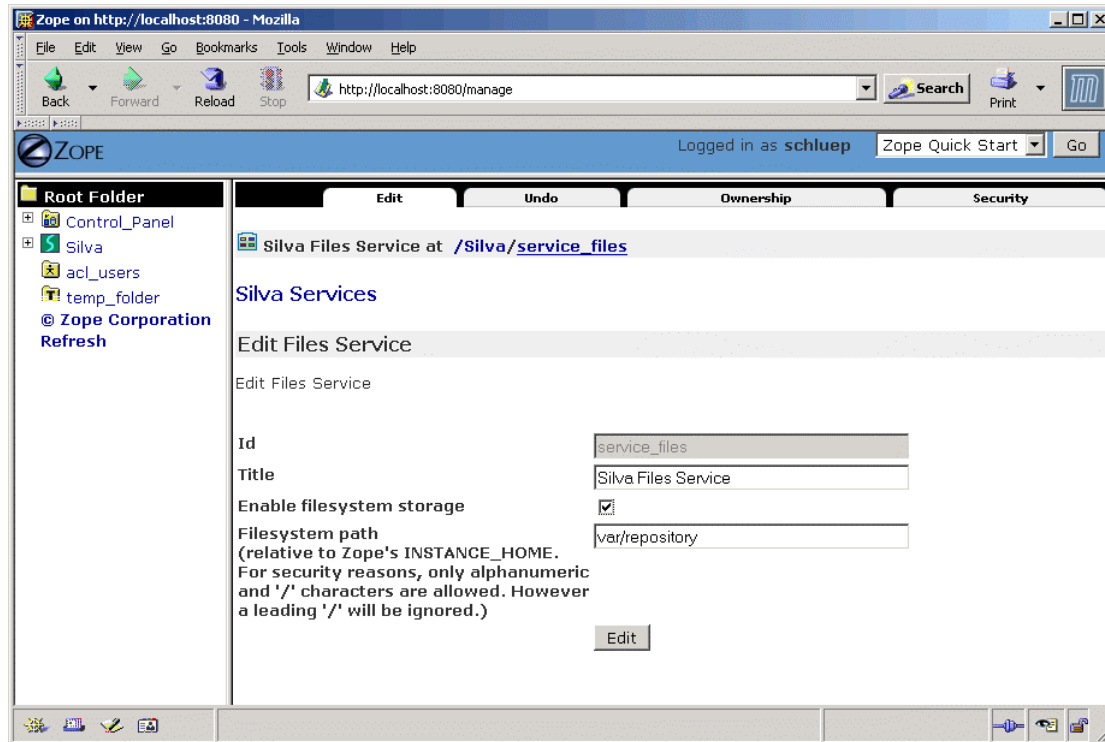
If you plan to manage large upload files with Silva, which should not be stored in the ZODB but the plain file system, you may consider installing the `ExtFile` product. This product is optional.

1. Stop the Zope server by closing the Command Prompt window.
2. Download `ExtFile-1.5.2.tar.gz` from <http://zope.org/Members/shh/ExtFile/1.5.2/>
3. Unzip `ExtFile-1.5.2.tar.gz` to `C:\win32app\Silva_16\Products`
4. Start the Zope server again, by double-clicking `runzope.bat` (in `C:\win32app\Silva_16\bin`). Point your browser to <http://localhost:8080/manage> and login as administrator.
5. Navigate to ZMI *Silva* folder. Click the *Services* tab. Click on *service_files* in the list of services.



6. Select the checkbox *Enable filesystem storage*.
7. Click the *Edit* button.

Note that enabling/disabling ExtFile storage does not change the storage of the already present Silva File objects.





Some other setting, just in case you want this (for Experts only, optional)

Set the Zope-Server **http-port** to **80** (standard http-port)

1. In C:\win32app\Silva_16\etc\zope.conf change the line:

```
<http-server>
# valid keys are "address" and "force-connection-close"
address 8080
# force-connection-close on
</http-server>

to

<http-server>
# valid keys are "address" and "force-connection-close"
address 80
# force-connection-close on
</http-server>
```

2. Restart Zope

Turn the **debug mode** on:

1. In C:\win32app\Silva_16\etc\zope.conf change the line:

```
# debug-mode on

to

debug-mode on
```

2. Restart Zope

Install Zope as a **Windows Service**:

1. In C:\win32app\Silva_16\bin\zopeservice.py change the line:

```
PYTHON = r'D:\win32app\Zope-2.8.8-final\bin\pythonw.exe'

to

PYTHON = r'D:\win32app\Python23\pythonw.exe'
```

2. Set the environment variable PYTHONPATH to
C:\win32app\Zope-2.8.8-final\lib\python
(*Start – Control Panel – System – Advanced – Environment Variables – System variables – New*). Make sure you entered the correct path!
3. Open a *Command Prompt* window.
4. Enter C:
5. Enter cd \win32app\Silva_16\bin
6. Enter
\win32app\Zope-2.8.8-final\bin\python zopeservice.py --startup auto
install
7. Enter \win32app\Zope-2.8.8-final\bin\python zopeservice.py start

To stop or remove the service use the options stop or remove instead of start (see the comments in zopeservice.py for further instructions). You can also control the service by the *services control panel*: right click *My Computer – Manage – Services and Applications – Services – Zope instance at ...*).



i “@set PYTHONCASEOK=” is needed especially if Silva is installed on an IBM Thinkpad. Starting Zope without this statement might result in an error like

```
C:\win32app\Zope-2.8.5-final\bin\lib\fcntl.py:7: DeprecationWarning: the FCNTL module is deprecated; please use fcntl
```

If such a message appears you will also have to delete the file C:\win32app\Python23\Lib\fcntl.pyc.

See also <http://mail.zope.org/pipermail/zope-collector-monitor/2005-March/005236.html> and <http://plone.org/documentation/error/attribute-flock>